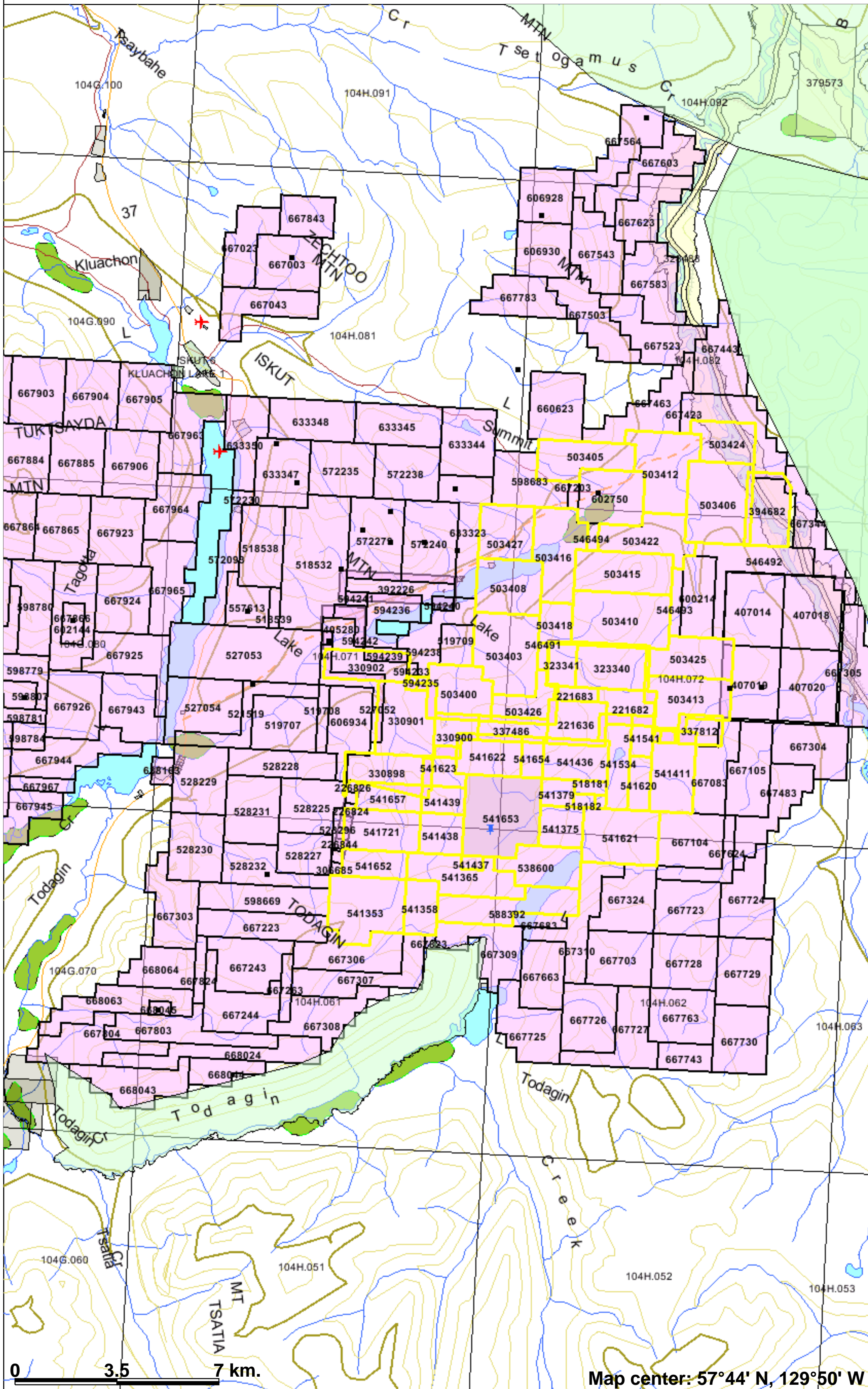


Imperial Metals



Legend

- MINFILE Status**
- Producer
 - Past Producer
 - Developed Prospect
 - All others
- Indian Reserves**
- National Parks**
- Conservancy Areas**
- Parks**
- Mineral Tenure (current)**
- Mineral Claim
 - Mineral Lease
- Mineral Reserves (current)**
- Placer Claim Designation
 - Placer Lease Designation
 - No Staking Reserve
 - Conditional Reserve
 - Release Required Reserve
 - Surface Restriction
 - Recreation Area
 - Others
- Mining Division (MTO)**
- Survey Parcels**
- BCGS Grid**
- Contours (1:250K)**
- Contour - Index
 - Contour - Intermediate
 - Area of Exclusion
 - Area of Indefinite Contours
- Annotation (1:250K)**
- Transportation - Points (1:250K)**
- Airfield
 - Anchorage - Seaplane
 - Ferry Route
 - Heliport
 - Seaplane Base
 - Air Field
 - Airport
 - Air Feature - Condition Unknown
 - Airport - Abandoned
- Transportation - Lines (1:250K)**
- Ferry Route
 - Aerial Cableway
 - Road (Gravel Undivided) - 1 Lane
 - Road (Gravel Undivided) - 3 Lanes
 - Road - Paved, Lanes 2 or More, Divided
 - Road (Paved Undivided) - Not Elevated - 1 Lane
 - Road (Paved Undivided) - Not Elevated - 2 Lanes
 - Road - Paved, Lanes 3 or More, Undivided
 - Road (Unimproved)
 - Road - Loose access Dry Weather
 - Road (Winter Road)
 - Road - Paved, Lanes 2, Undivided
 - Road - Paved, Lanes 2, Undivided, U/C
 - Road - Paved, Divided, access, Non Standard
 - Track - Car/Tractor
 - Causeway (Railway)
 - Cut (Roadway)
 - Trail
 - Tunnel
 - Bridge
 - Rail Line - Narrow Gauge - Single Track
 - Rail Line (Multiple Track)
 - Rail Line (Single Track)
 - Rail Line - Abandoned Track
 - Cable - Telephone
 - Cable - Underwater
 - Line (Transmission) - Electrical
 - Line (Transmission) - Electrical - Primary
 - Pipeline - Aboveground
 - Pipeline - Crude Oil/Synthetic Oil - Transmission - Above Ground
 - Pipeline - Crude Oil/Synthetic Oil - Transmission - Underground
 - Pipeline - Natural Gas - Transmission - Above Ground
 - Pipeline - Natural Gas - Transmission - Underground
 - Pipeline - Underground
- Water - Points (1:250K)**
- Rapids
 - Falls
 - Dam

0 3.5 7 km.

Map center: 57°44' N, 129°50' W



Scale: 1:100,000

This map is a user generated static output from an Internet mapping site and is for general reference only. Data layers that appear on this map may or may not be accurate, current, or otherwise reliable. THIS MAP IS NOT TO BE USED FOR NAVIGATION.